

EcoEclipse Dispenser System Installation



Before You Install Your EcoEclipse Dispenser

- Read these instructions thoroughly before starting your installation.
- You will need **ADHESIVE** caulk, a level, and masking tape or a dry erase marker.
- Be sure to remove the bottles before installing. For bottle removal instructions, see Step 9.
- After installation, please wait a minimum of one hour before inserting filled bottles into your EcoEclipse dispenser.
- Don't worry. Hundreds of properties have successfully installed our EcoEclipse dispenser, and you will too.

Step 1 - Finding the Right Location

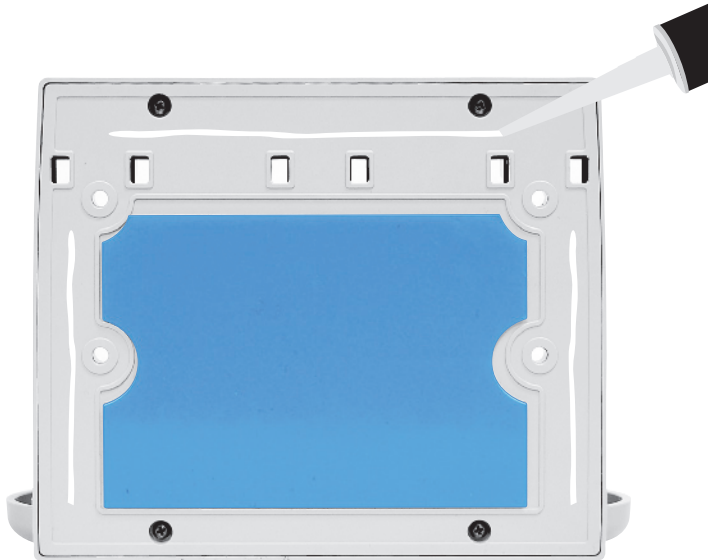
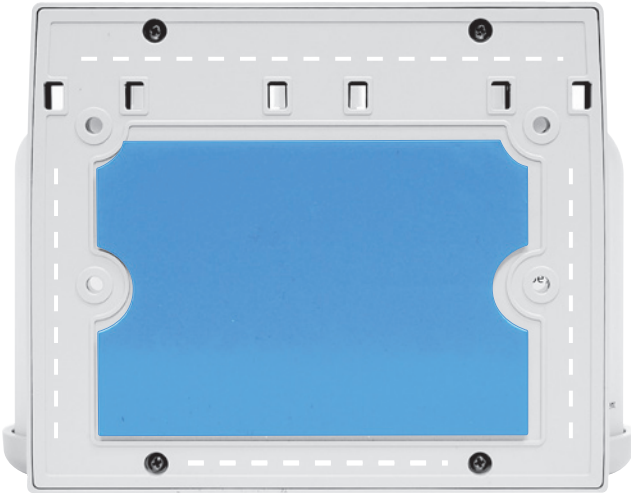


- 1a.** Decide how high up you want your dispenser. The recommended height is 56" from the floor to the base of the dispenser. It's not a good idea to make someone reach up or down too much in the shower, because the surface of the tub or shower will be wet and it will increase the chances that someone will slip.

To comply with ADA standards, wall mounted units should be located where their pumps are 44" (1,117 mm) above the finished floor.

- 1b.** Use a level to make sure your dispenser is aligned horizontally and vertically. Then use masking tape or a dry erase pen to mark the upper corners.
- 1c.** Make sure that the dispenser's location won't interfere with using the shower. Does it get in the way when entering the shower? Will water from the shower spray on it constantly?
- 1d.** Also make sure the installation surface is clean and dry. Grime or soap scum will decrease the effectiveness of the adhesive and could cause the dispenser to dislodge prematurely.

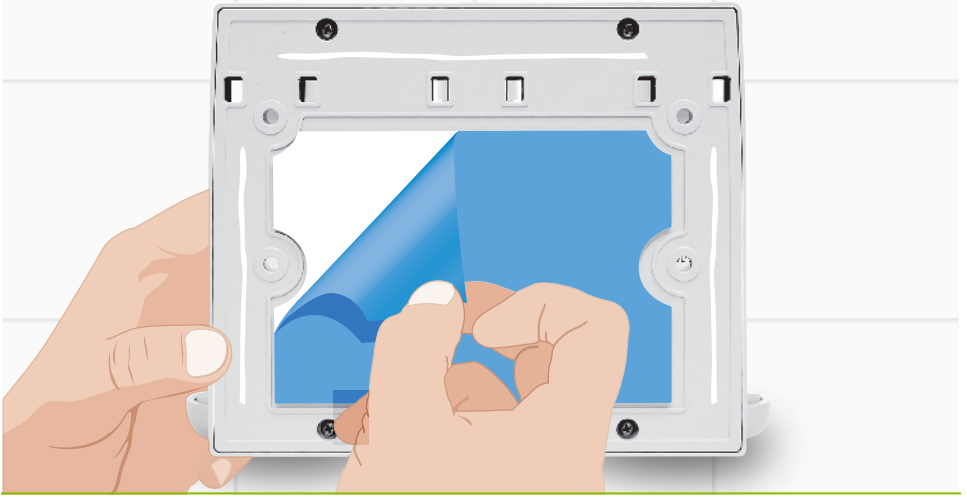
Step 2 - Preparing the Adhesives



Before removing the blue tape, use adhesive caulk and lay a small bead around the outside of the back plate as shown in the graphics above

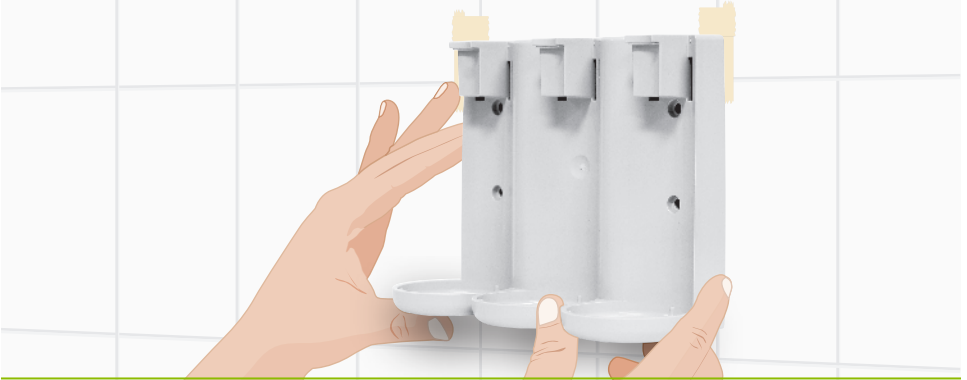
Note: Please make sure you are using ADHESIVE caulk.

Step 3 - Readying the Adhesive



- 3a.** Make sure you know exactly where you are going to place the unit before removing the tape.
- 3b.** Remove tape carefully as the tape can be very sticky. Also try to avoid smearing your lines of adhesive caulk.

Step 4 - Adhering the Dispenser



- 4a.** Hold the unit with both hands.
- 4b.** Tip the bottom of the unit toward you so only the top edge will hit the wall.
- 4c.** Once the top edge is in the proper location, tip the dispenser back so that it adheres to the wall.
- 4d.** Take both hands and push dispenser against the wall for 15 seconds.

Step 5 - Caulking the Edges



We recommend placing a small bead of clear or white caulk around the outside edges of the dispenser. This will prevent soap grime from getting behind the unit.

Step 6 - Take a Break



Now that the unit is on the wall, wait a minimum of 1 hour or the recommended 4 hours for everything to dry before inserting your bottles.

Step 7 - Loading Your Dispenser



Now load the filled bottles. From left to right, they should be loaded as Shampoo, Conditioner & Body Wash. Bottles will go in easier if you insert them bottom first.

Step 8 - Applying the Tamper-Resistant Locking Clamps



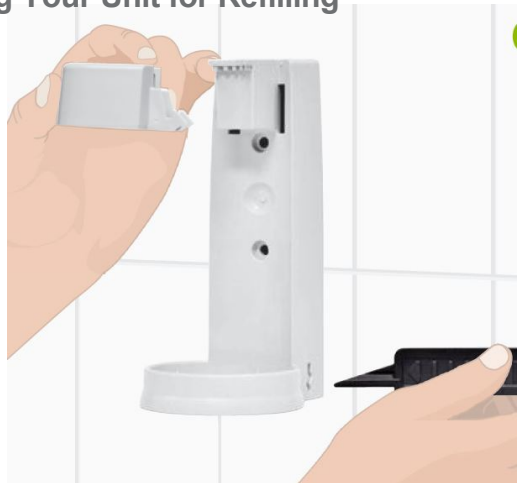
Snap the locking clamps into place over each bottle as shown in the graphic.

Step 9 - Unlocking Your Unit for Refilling (Triple Brackets)



- 9a. To remove the locking clamps to replace or refill the bottles, place your EcoEclipse key in bottom of unit and PRESS UPWARDS as you pull off the locking clamp.
- 9b. Do not turn or twist the key as this may break your key or your locking clamps.

Step 9 - Unlocking Your Unit for Refilling (Single Brackets)



636-922-2285
pineapplehospitality.net
accounting@pineapplehospitality.net

Please contact us if you have additional questions.